

PAVILION





SODIC CITY

SODIC City is where the hustle and bustle of everyday gives way to a more efficient, premium, and welcoming nature within inspiring environments. From the varied residential communities and choice establishments to the sculpted landscapes, SODIC City highlights a more refined style, a higher quality, and a superior concept of convenience for those who aspire to greater things.



SODIC COMMERCIAL



SODIC has transformed the way people live and work with a unique commercial convenience, second to none. From signature brands to grocery items to schools and business districts, restaurants, medical centers to just about anything you could possibly need, you'll find it right here in our SODIC west and east projects, where everything and everyone belongs.



The Polygon



EDNC



WESTOWN BUSINESS PARK



WESTOWN HUB



The Strip



The Strip II



BUSINESS ACCESSIBILITY

135,000 sqm
COMMERCIAL

360
OFFICE SPACES

60
RETAIL UNITS

2300
PARKING PLOTS FOR OFFICES

2
MINUTES FROM



5
MINUTES FROM



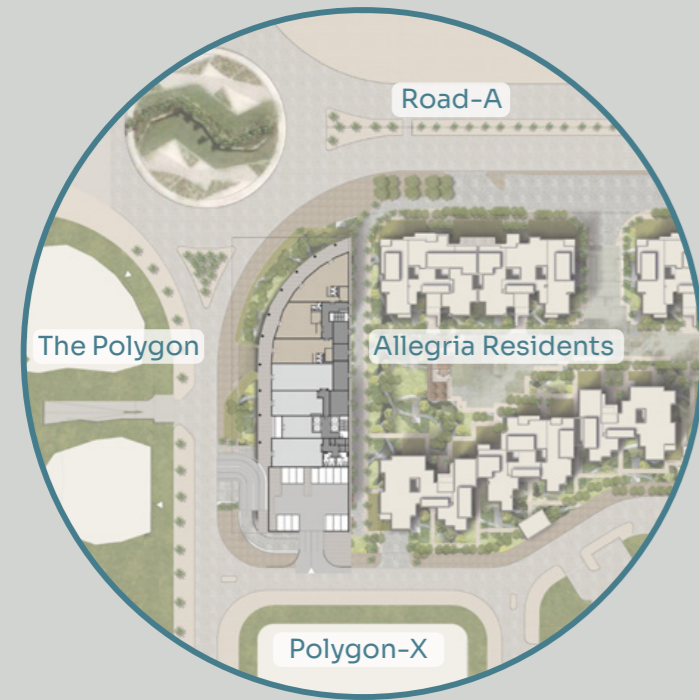
5
MINUTES FROM



7
MINUTES FROM



PAVILION



Sphinx International Airport



Rod El Farag



Smart Village

SODIC WEST

Sheikh Zayed

Arkan Plaza

Dahshour Road

October Plaza

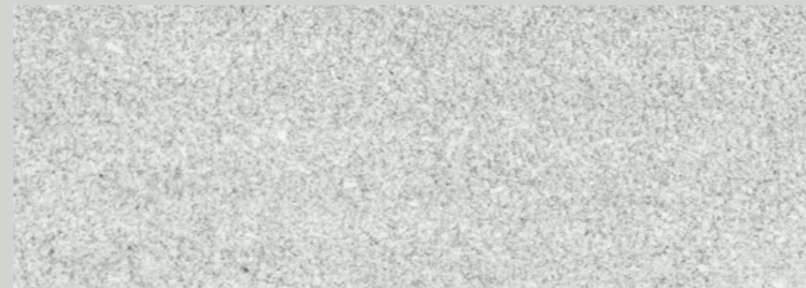
Mall of Arabia

Juhayna Square

Strategically located in the heart of SODIC West, SODIC Business District is surrounded by established retail, entertainment, and commercial venues. Pavilion is perfectly situated inside Allegria Residences right on Road A, overlooking the golf views of Allegria and the British International School Cairo. The central location of the district will enhance the feeling of the city-like vibes of SODIC West, with over 22 banks and ATM's, 3 major mobile operators, business centers, gyms, restaurants, cafes, shops, clubs, schools, and clinics. Not to mention the endless nature surrounding the community and close proximity to The Hub, Walk of Cairo, Forty West and Casa.



THE LOCATION



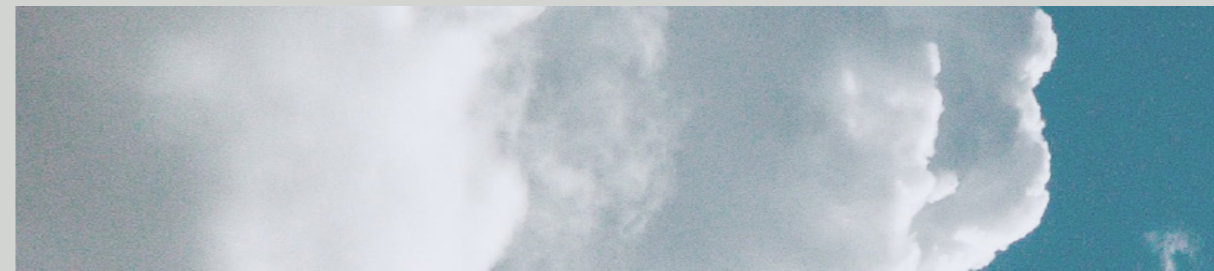
INTRODUCING SODIC'S SIGNATURES

With homes tailored to reflect your style and personality, 'SODIC Signatures' takes premium living to a new level. With integrated communities focused on what's most important to you, you can rest easy knowing that you're getting the most premium services available, whether it's the spa, retail, or education. 'SODIC Signatures' introduces an unparalleled level of luxury with exclusive community management alongside the amenities, style, quality, and comfort that cement 'Signatures' as SODIC's flagship developments.



ALLEGRIA RESIDENCE

Welcome to Allegria Residence, SODIC's last residential project within its thriving SODIC West community. Situated on the most prime location on SODIC West's main road, Allegria Residence offers a complete ready-to-move-in experience, with homes being delivered in one of three unique finishing options. This project crowns the SODIC West destination, by overlooking SODIC's flagship development, Allegria. The project is perfectly positioned to take advantage of everything that SODIC West has to offer; SODIC Sports Club, Westown Hub, and its exclusive community that has developed over the past decade.



THE EXPERIENCE

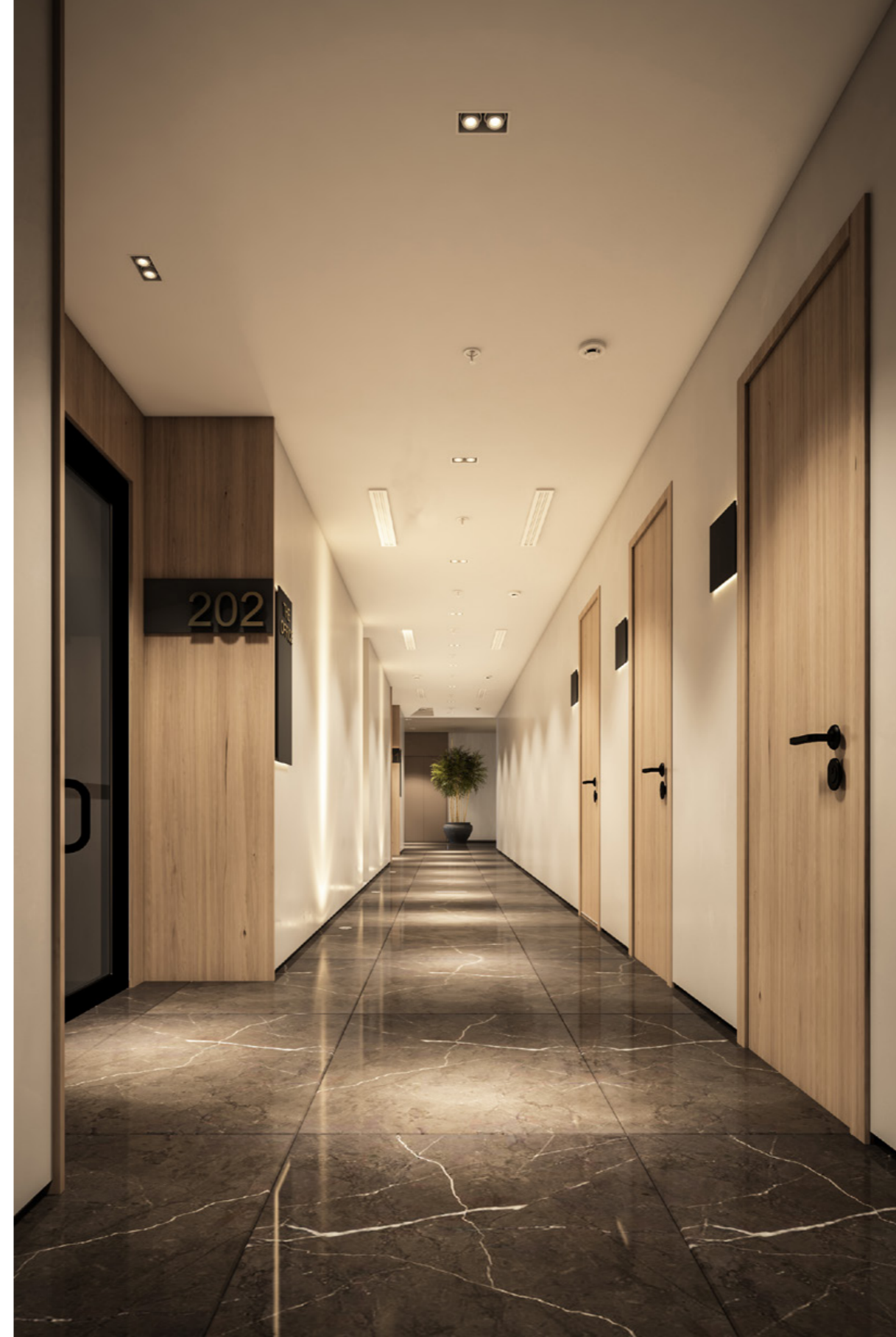
The use of wisely selected Pietra grey marble and the triple height ceiling was implemented by SODIC to embrace and ensure a unique, exclusive, and luxurious office finishing. The triple-height ceiling will emphasize the district's luxury highlighting its spaciousness with a spectacular welcome. The reflection of the famous Iranian marbles with the innovative architecture initiative will contribute to the space's premium feel completing the high-end look to the construction.





SODIC supports enterprises in the office space by providing a wide range of facilities to ensure maximum productivity and relaxation. Businesses will benefit from a more relaxed environment by increasing job satisfaction and reducing stress. Prioritizing the most pleasant commercial district experiences. Offering underground parking that will help enhance parking capacity to scale for customer requirements. Furthermore, offering exclusive shared service rooms and providing a unique retail and F&B experience. Pavilion uses Fiber-Optic Networks for more advanced internet connectivity, security access cards for all building users and 3 high speed elevators. To top it all off, safety is fully covered with an advanced firefighting system and 7/24 security and property management.

THE AMENITIES

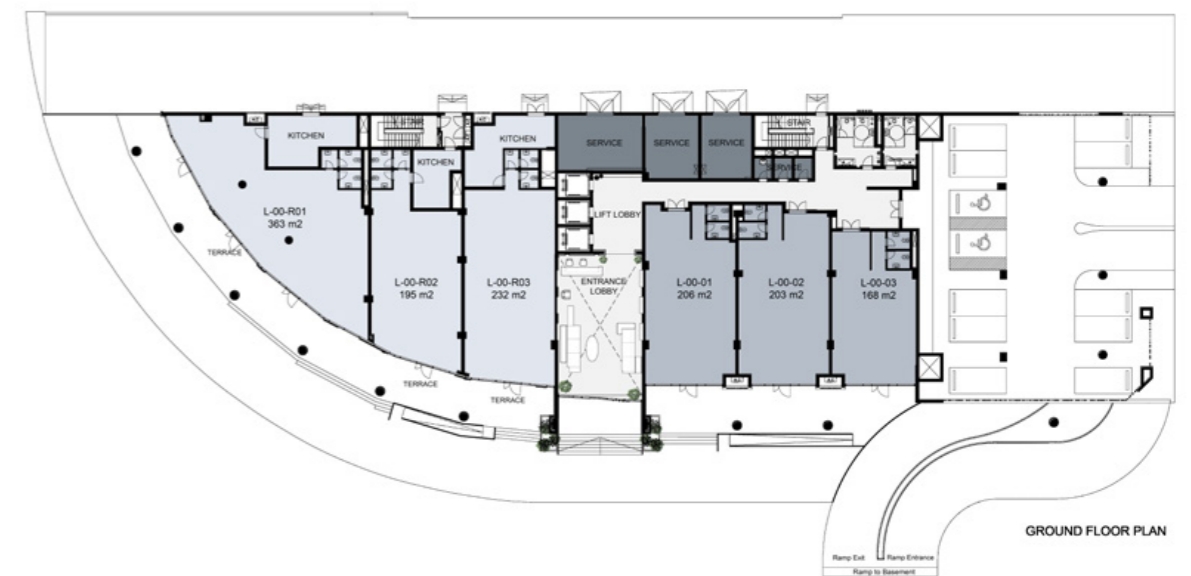


FLOOR PLANS

FLOOR NUMBER

00

3 Retail units
3 Offices
Floor: Ground
Gross Area: 1367 sqm



FLOOR NUMBER

01

10 Offices
Floor: First
Gross Area: 2139 sqm



FIRST FLOOR PLAN

FLOOR NUMBER

02

10 Offices
Floor: Second
Gross Area: 2073 sqm



SECOND FLOOR PLAN

FLOOR NUMBER

03

10 Offices
Floor: Third
Gross Area: 2014 sqm



THIRD FLOOR PLAN

DISCLAIMER:

- Diagrams are not to scale and are for illustrative purposes.
- SODIC reserves the right to make minor alterations.
- All rendering and other visual materials, designs, facades are for illustrative purposes only and are subject to change.
- SODIC reserves the right to use different finishing elements and sanitary fixtures models from those which are shown in renders and specification sheets.
- Final models used in our finishing are similar and subject to market and availability at the time of operations.
- This brochure contains material, which is owned by or licensed to SODIC. This material includes, but not limited to, the design, layout, look, appearance and graphics. Reproduction is prohibited.

